

PITE 3915 Battery Tester

What can PITE do?

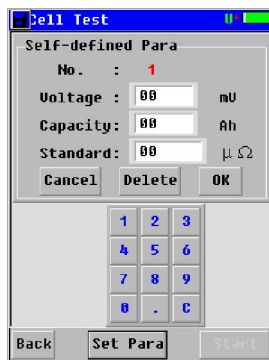
Regular maintenance and test is a “must-have” procedure for VRLA batteries. It is also recommended by IEEE latest standard for maintenance and testing of standby batteries. The excellent performance of PITE 3915 for testing cell resistance and voltage will help you eliminate the weak batteries and ensure their performance.

What is PITE 3915?

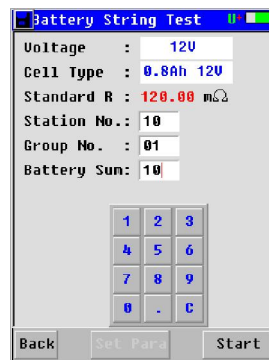
PITE 3915 is a new generation of battery tester with touch-screen. It is strictly designed to evaluate and maintain all stationary batteries including Uninterruptible Power System.



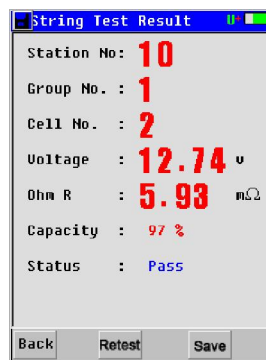
Functional Display



Self-defined parameter



Battery string test



Vivid testing result

String test brief:					
Total:12 cell(s):					
R avg:	1.018 $m\Omega$				
U avg:	2.032 v				
R Highest cells:					
No.	R($m\Omega$)	U(V)	No.	R($m\Omega$)	U(V)
08	1.097	2.015	07	1.097	2.014
05	1.096	2.019	04	1.095	2.018
03	1.095	2.017	06	1.094	2.015
02	1.092	2.019	01	1.092	2.021
U lowest cells:					
No.	R($m\Omega$)	U(V)	No.	R($m\Omega$)	U(V)
07	1.097	2.014	06	1.094	2.015
08	1.097	2.015	03	1.095	2.017
04	1.095	2.018	02	1.092	2.019
05	1.096	2.019	01	1.092	2.021
[Back]					

String test brief

Features

- ◆ Wide test range: 5–6000Ah, compatible for cell of 1.2V, 2V, 6V and 12V
- ◆ Smart and portable hand-held device, rugged and easy-to-go
- ◆ Colorful touch screen with optional operations of keyboard and touch screen
- ◆ Simultaneously test for voltage, resistance and relative percentage of batteries

- ◆ Online measurement, no need to remove battery and string from its system for testing, safe and convenient
- ◆ Fast testing for battery and string in seconds with testing data auto saving
- ◆ Strong anti-interference in high current with stable and accurate performance
- ◆ Testing frequency lower than 10 Hz, effectively avoid interference from capacitive resistance of battery itself
- ◆ Direct USB drive for software update and data transfer to PC for further analyzing
- ◆ Powerful PC management software, convenient for data storage and analyzing
- ◆ Big memory for testing data storage of more than 3000 cells
- ◆ Buzzer Alarm Function and over voltage protection
- ◆ Auto-calibration function before testing enhances the testing accuracy
- ◆ Retest and compensation function: any faulty operation or omission could be retested simply with one click
- ◆ More than 250 standard data for the reference of your test

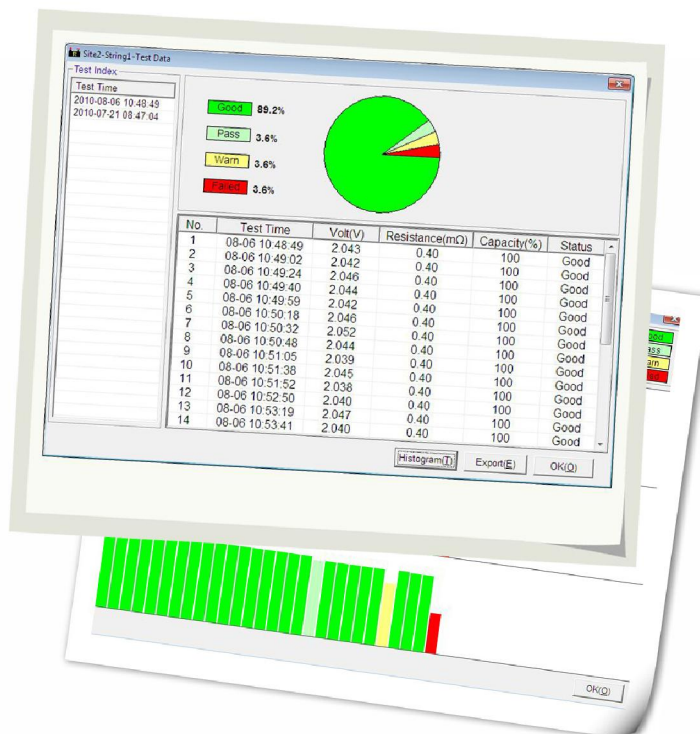
Technical Parameters

Resistance range	0.00m ~ 100m	Voltage range	0.000V ~220V*
Minimum test resolution		Test accuracy	
-resistance	0.1m	-resistance	±1.0%rdg ±6dgt
-voltage	1mv	-voltage	±0.2%rdg ±6dgt
Power supply	Li-ion battery	Working time	More than 8 hours
Measuring data memory	>3000 cells	Operation environment	0 to 40 90% R.H
Measuring cells per string	1 cells 254	LCD display	320*240 pixel TFT
Net weight	2 kg	Dimension	L210*W110*H60 mm

NOTE: 16V-220V is for over voltage protection.

PITE DataView

PITE DataView software provides smart solutions for data analyzing, battery condition tracking and report printing.



Contact PITE

PITE TECH. INC.

4/F, Bldg A, Chiwan Industrial Park, Shaodi Road, Shekou Area, Shenzhen, China

TEL: +86-755-2680 5759 FAX: +86-755-2688 0310

www.pitetech.com sales@pitetech.com