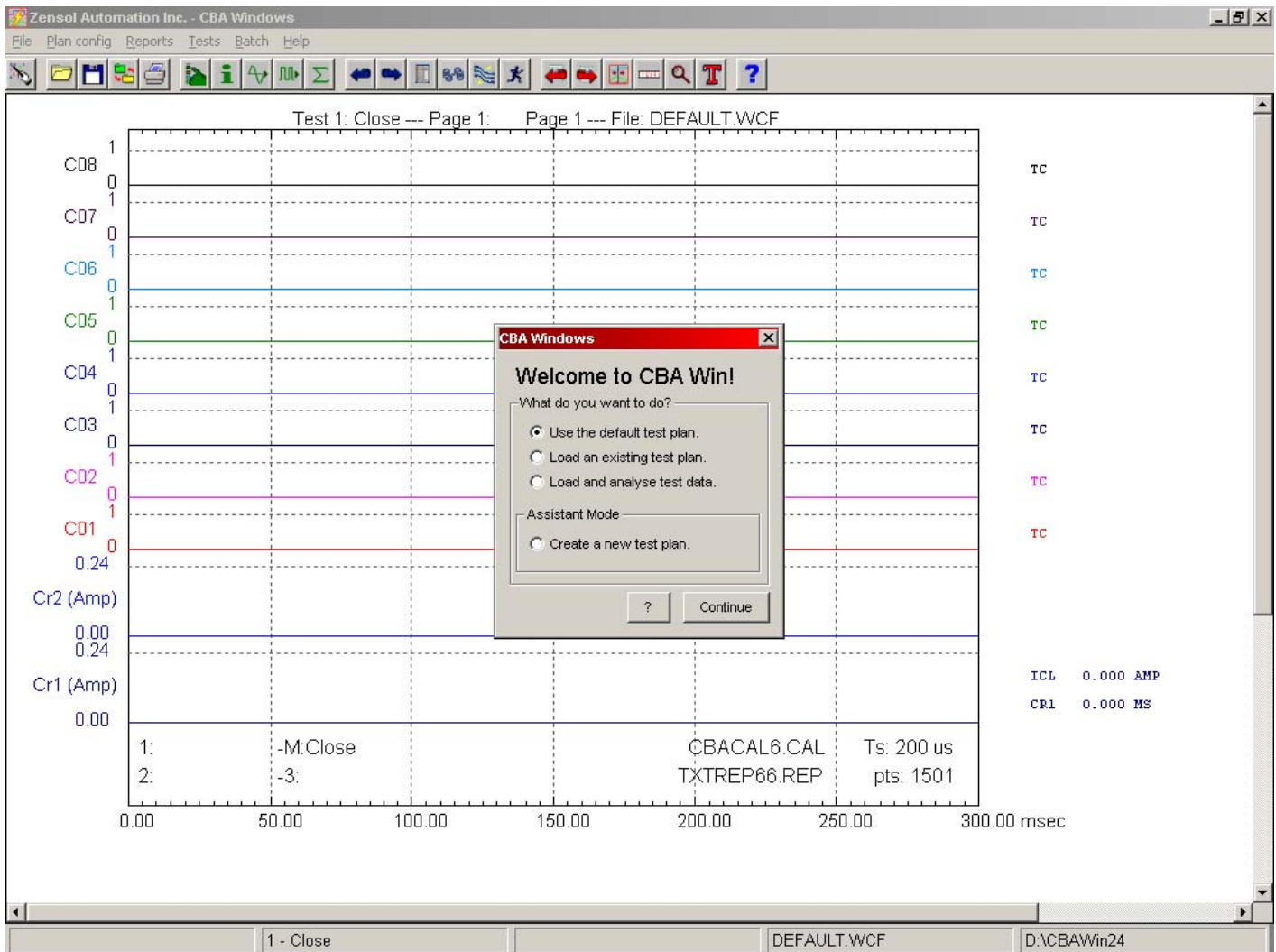


CBA Win Version 2.4 has arrived!



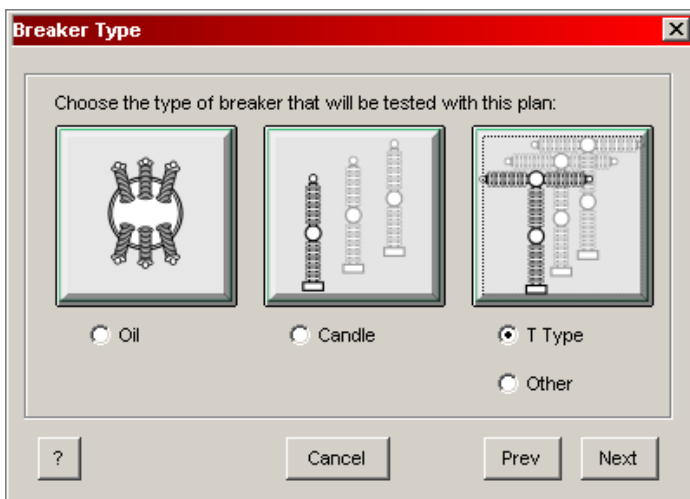
The latest release of Zensol's breaker performance analysis software, while having all the handy features of version 1.7, incorporates new features making more intuitive and easier to use than ever!

- Improved and friendlier Plan Wizard.
- Graphic representation of breaker connections.
- More information available in the cable test.
- Enhanced graphic analysis tools
- More powerful export functions.

Step by step test plan design

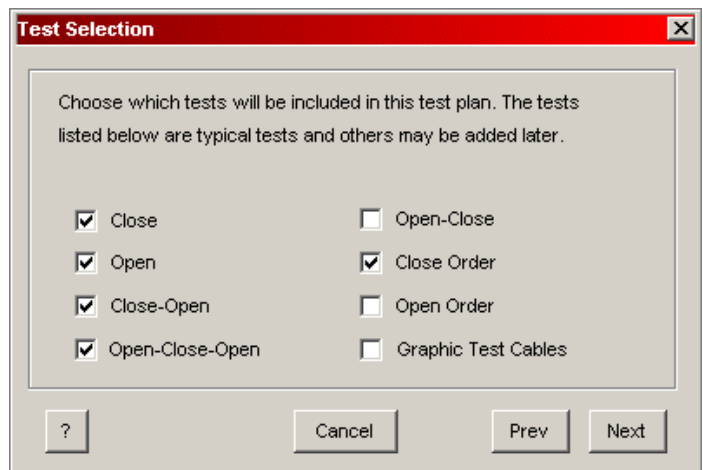
CBA Win 2.4 now has a new, easier-to-use, simplified Plan Wizard where the user only fills in a few simple parameters, and the software will construct the test plan in a blink of an eye.

Simple and intuitive windows guide the user through the process of creating a new test plan:



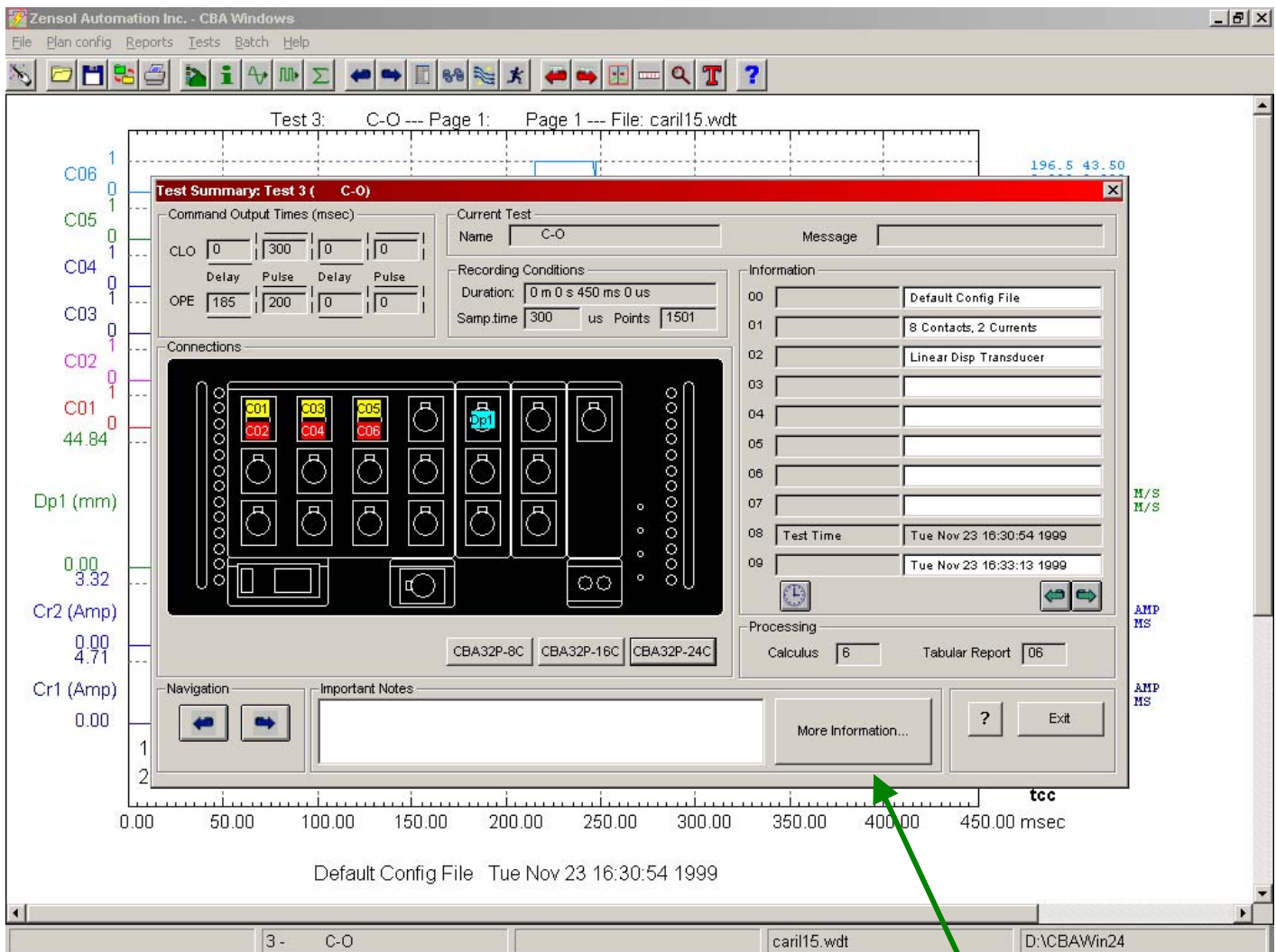
Creating a test plan tailored for your breaker types is easier than ever with graphic buttons that make your choice as simple as a click of the mouse.

Selecting tests to be performed is greatly simplified: a list of the most common breaker tests is displayed and one need only check the appropriate boxes to include those tests in the new plan.



Visualize your connections

CBA Win version 2.4 now features a graphical representation of the connections and labeling of the channels as they are connected to the front panel of the CBA-32P.

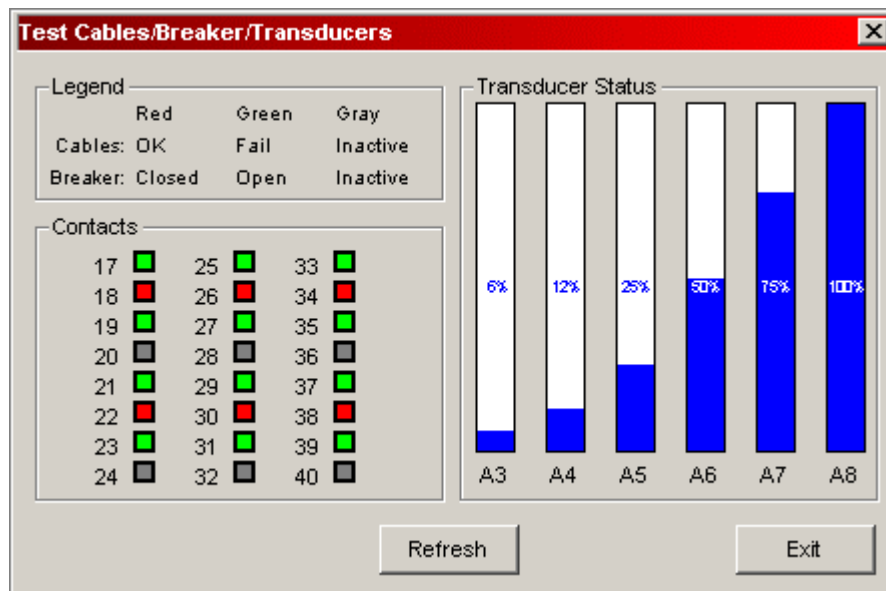


Connections are shown for the appropriate instrument type, whether it is a 24 contact unit or a Micro CBA.

Also, any type of file may be associated with the More Information button, such as pictures, text files, word processor documents, etc.

See what's going on

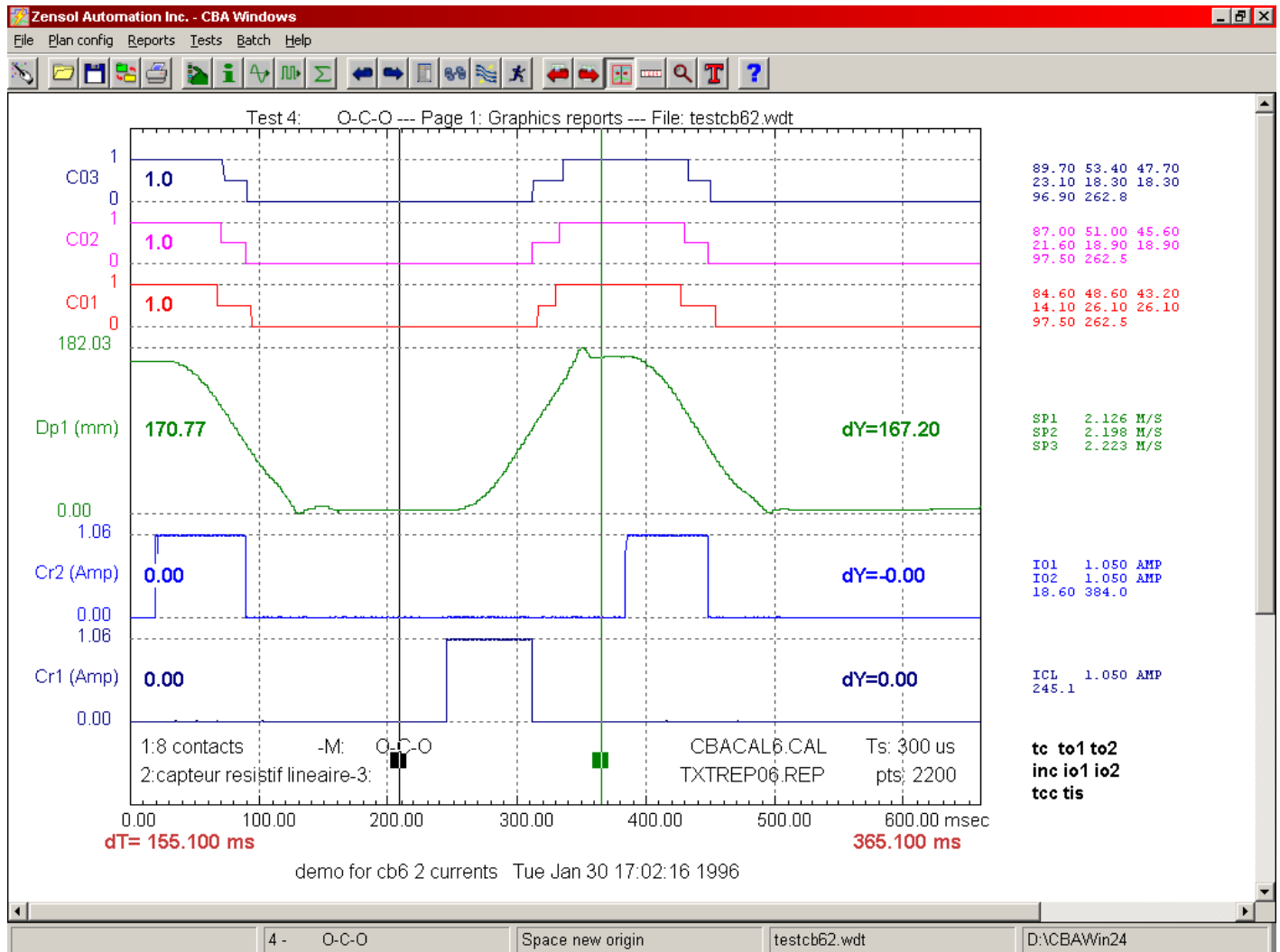
The cable test function has been enhanced to include not only the state of the breaker contacts, but also of the transducers connected to the analog channels.



The state of the contacts is now rendered in color, to make it even easier to spot trouble before testing even begins.

Analyze your data on screen

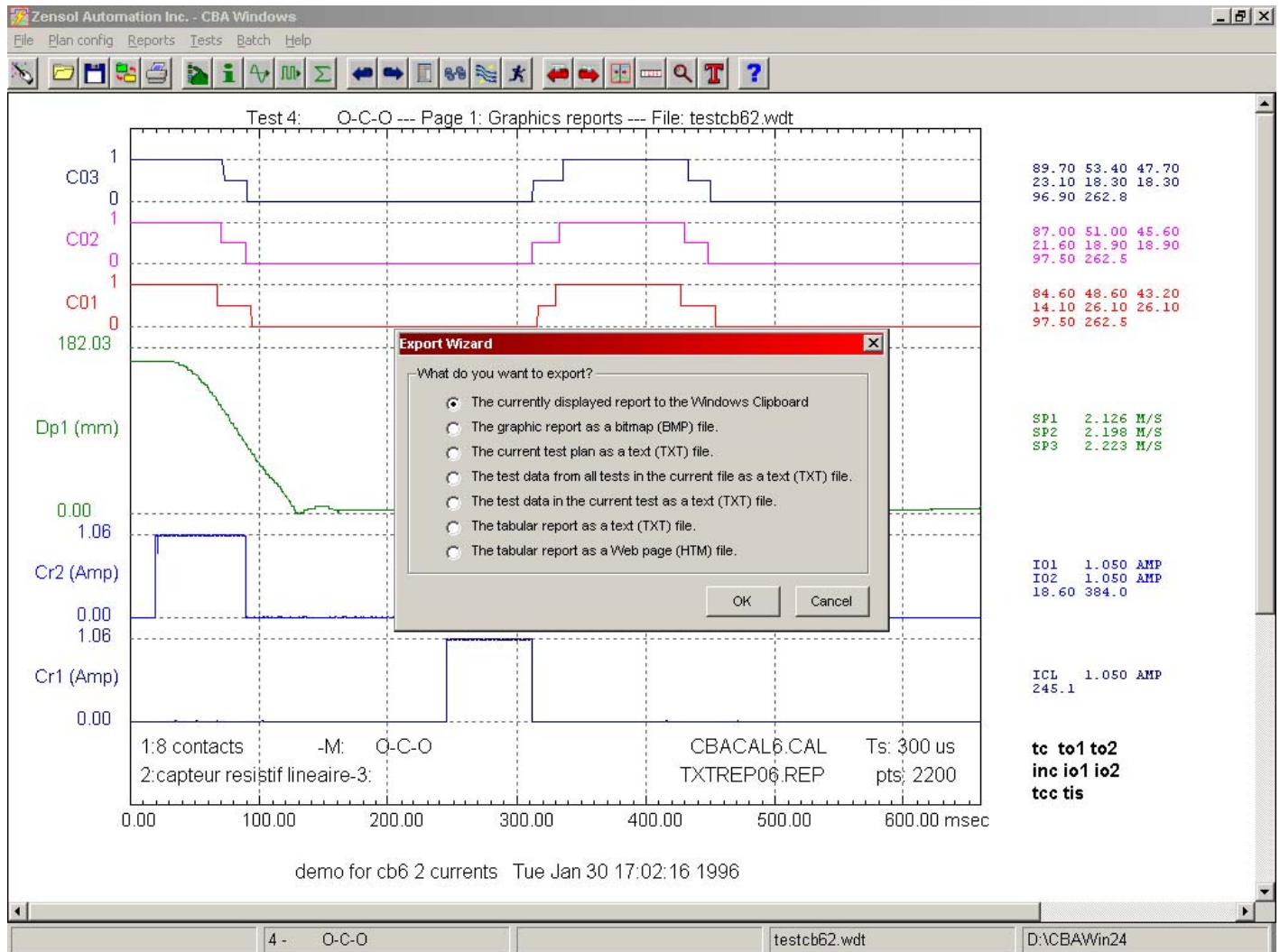
Of all the graphic analysis tools, the Examine tool is the most useful and powerful. The user can directly measure any signal and also determine both time differences between events and signal value differences at different times.



The cursors can now be dragged with the mouse to the desired location, and the position fine tuned with the keyboard.

Use your data anywhere

CBA Win version 2.4 now features an easier and more powerful set of export tools enabling the user to include graphics, tabular reports and even numerical data in other applications, such as word processors, spreadsheets, and imaging software.



Reptame Equipment Inc.
www.reptame.com
 (905) 936-6979